

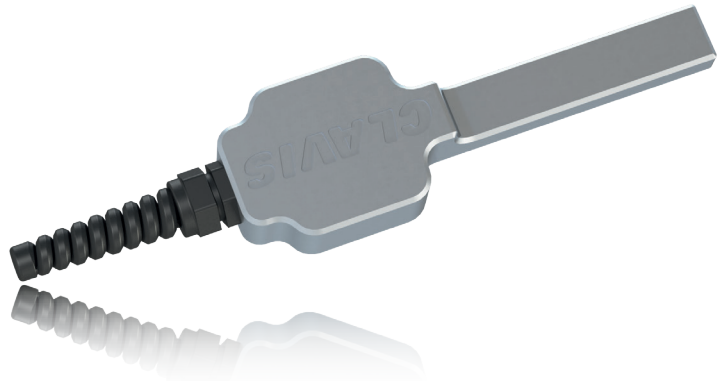


Miniature version  
of the Type 10

Sensor Head Type:  
Optical

## PRODUCT DATA SHEET

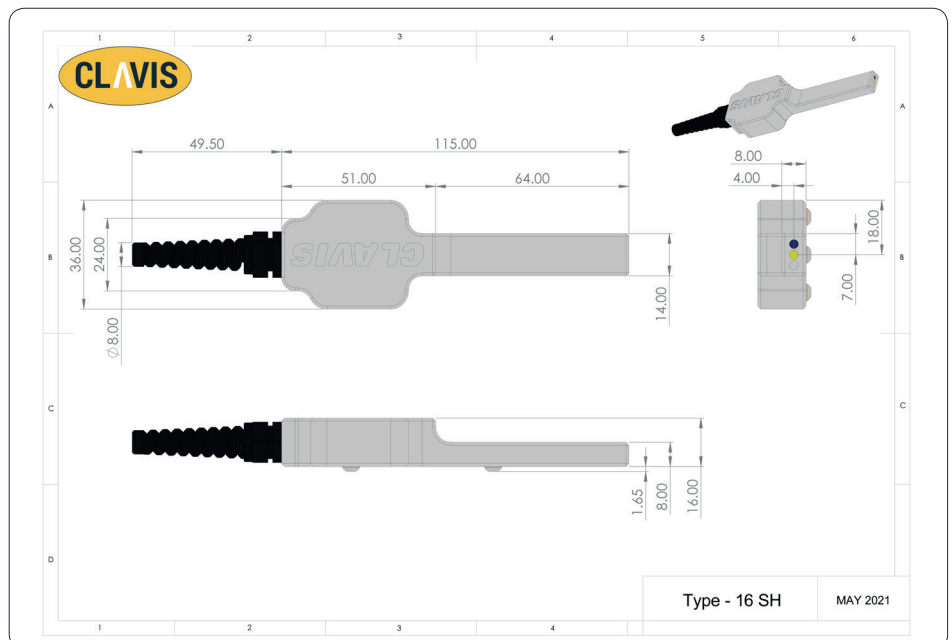
# Type 16 Sensor Head



## TECHNICAL SPECIFICATION

Environment Conditions	
Operating Temperature	+10°C to +50°C +50°F to +122°F
Shipping & Storage Temperature	+5°C to +70°C +23°F to +158°F
Protection Class	IP54
Sensor (Optical)	
Type	Infrared Optical
IR Wavelength	940nm
Visible Aiming Beam	Narrow Angle Orange LED
Housing	Machined Aluminium (Anodised Titanium Grey)
Cable length	1.25m

## DIMENSIONS



IDS

IDS INTEGRATED  
DISPLAY SYSTEMS LTD

Unit 4A New York Way  
New York Industrial Park  
Newcastle upon Tyne  
NE27 0QF, UK

admin@clavis.co.uk  
t: + 44 (0) 191 262 7869

[www.clavis.co.uk](http://www.clavis.co.uk)